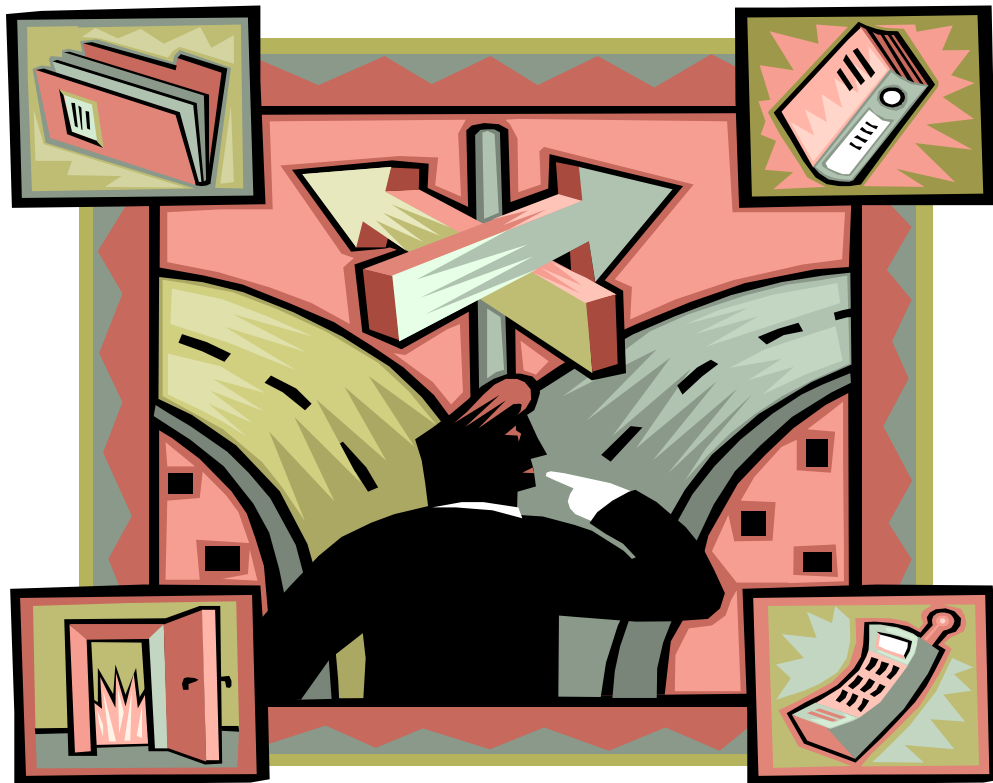


GROSSMONT UNION HIGH SCHOOL DISTRICT

ALTERNATIVE PROGRAMS 2008/2009



**2008/2009
TABLE OF CONTENTS**

Chaparral High School	1
Challenge Program	2
Community Day School (Gateway East and Gateway West)	3
Discipline Interventions	
Alternatives To Smoking (A.T.S.)	4
Pointing Adolescents Toward Health (P.A.T.H.)	5
Positive Actions for Student Sobriety (P.A.S.S.)	6
Systems To Encourage Peace (S.T.E.P.)	7
Foundations – Special Education	8
G.E.D. Prep Program	9
Homestead – Special Education	10
Home Choice	11
Home Choice Learning Center	12
Home/Hospital Instruction Program	13
Middle College	14
Phoenix Independent Study	15
Regional Occupational Program	16
Teen Parent Program	17

CHAPARRAL HIGH SCHOOL

- For voluntary transfer students (10th – 12th grade) and involuntary transfer students who have successfully completed the Challenge Program or are English Language Learners or Special Ed. students referred through I.E.P. team.
- Referrals are made by the home school administrator.
- Voluntary students attend for a minimum of one semester.
- Involuntary students attend for a minimum of a semester plus one.
- Incoming students complete a one week orientation program.
- On-site individual or group counseling is available through Harmonium.
- Students typically have a six period day starting at 8:10 a.m. and ending at 2:44 p.m.
- Fridays are a minimum day, with classes starting at 8:10 a.m. and ending at 12:21 p.m.
- Class completion is based on work completed and 60 hours of seat time (traditional high school classes require 95 hours of seat time).
- Students with near perfect attendance and working at an accelerated rate can potentially earn a maximum of 45 credits in a semester. This is rare.
- Classes at Chaparral have an average of 18 to 20 students per class.
- Classes are taught using direct instruction and self-paced contract packets that meet the content standards.
- Chaparral is WASC accredited and students who meet graduation requirements receive a diploma from Chaparral High School.

For more information contact a Chaparral administrator:

Randy Reid (619) 258-3740 ext. 202

Lynelle Nicholson (619) 258-3740 ext. 203

Lucia Washburn (619) 258-3740 ext. 210

CHALLENGE PROGRAM

- For involuntary transfer students referred by a home school administrator for a second fight or extreme defiance.
- Challenge is a minimum nine week program held on the Chaparral campus.
- Students attend school for a four hour and twenty minute day.
- Students have three classes with three teachers.
- Students must successfully complete at least two classes in the nine week period, and must have good attendance and behavior before being moved to Chaparral.
- Students have a separate start, finish and break time from the Chaparral students.
- The program holds up to 60 students.
- Classes have no more than 20 students.
- Classes are taught using direct instruction and contract work and can be completed in 60 hours of seat time.
- Individual and group counseling are available through Harmonium.

For more information contact a Chaparral administrator:

Randy Reid (619) 258-3740 ext. 202

Lynelle Nicholson (619) 258-3740 ext. 203

Lucia Washburn (619) 258-3740 ext. 210

**COMMUNITY DAY SCHOOL (CDS)
GATEWAY EAST and GATEWAY WEST**

- Students eligible to attend a Community Day School must be on a suspended expulsion, on probation or S.A.R.B.ed.
- Students are referred to a Community Day School by Student Support Services or the Director of Alternative Education.
- Gateway East CDS is located in El Cajon and Gateway West CDS is located in La Mesa.
- Gateway East CDS holds up to 40 students and Gateway West CDS holds up to 60 students.
- Students attend classes for six and a half hours a day.
- Small class size with no more than 20 students per class.
- Students receive individualized instruction.
- Drug awareness and anger management counseling is available.
- Students attend the Community Day School until the GUHSD Governing Board lifts the expulsion.

For more information contact:

Student Support Services (619) 644-8012

Gateway East CDS (619) 442-4067

Gateway West CDS (619) 667-2707

A.P. in charge of Gateway East CDS (Randy Reid) (619) 258-3740 ext. 202

A.P. in charge of Gateway West CDS (Lynelle Nicholson) (619) 258-3740 ext. 203.

Director of Alternative Ed. (Lucia Washburn) (619) 258-3740 ext. 210

DISCIPLINE INTERVENTIONS
ALTERNATIVES TO SMOKING
(A.T.S.)

- Program for students who have had a first time smoking (tobacco) offense.
- Students are referred to A.T.S. by a home school administrator.
- A two day program which meets on Tuesday and Wednesday from 12:30 to 4:30 located in room 25 on the Chaparral Campus.
- Students are to report to A.T.S. the Tuesday following the incident.
- Successful completion of the program changes the suspension to a fieldtrip code.
- Eight hours of classroom instruction are required to complete the program.
- Instructional materials, including paper and pencils will be provided.
- Parents do not need to accompany the student to the class.
- The same discipline/dress code rules apply at Chaparral as at the home school.
- Transportation is not provided.

**For more information contact:
Leslie Gallagher (program instructor) (619) 258-3740**

DISCIPLINE INTERVENTIONS
POINTING ADOLESCENTS TO HEALTH
(P.A.T.H.)

- A mandatory program for students who have had a first time drug or alcohol offense.
- Students are referred to P.A.T.H. by a home school administrator. Paperwork is faxed to Chaparral High School (619) 596-7815.
- A five day program which meets Monday to Friday from 11:30 a.m. to 3:30 p.m. held on the Chaparral Campus.
- Students are to report to the program the first school day after the incident.
- Twenty classroom hours are required to complete the program.
- Small class size with individualized instruction.
- Successful completion of the program changes the suspension to a fieldtrip code.
- Alternative option for lower level special education students available.
- Instructional materials, including paper and pencils are provided.
- Parents do not need to accompany the student to the class.
- The same discipline/dress code rules apply at Chaparral as at the home school.
- Students who do not complete P.A.T.H. within eight days (with no doctor's note allowing for absences) will be referred to alternative education.
- Transportation is not provided.

For more information contact:
Marge Saberg (teacher) (619) 258-3740 ext. 235.

DISCIPLINE INTERVENTIONS
POSITIVE ACTIVITIES FOR STUDENT SOBRIETY
(P.A.S.S.)

- Program for students who have had a second drug or alcohol offense (except for sale of a controlled substance which is mandatory expulsion).
- A voluntary program that student and parent choose in lieu of expulsion.
- Students are referred to P.A.S.S. by a home school administrator.
- All required information must be faxed to Student Support Services (619) 698-3285.
- Students meet weekly from 3:15 p.m. to 5:00 p.m.
- P.A.S.S. is offered on Monday at West Hills, Tuesday at Chaparral, Wednesday at Granite Hill and Thursday at Mount Miguel.
- The length of the program is the same time length as an expulsion: the remainder of the semester of the incident plus one additional semester.
- Random weekly drug testing is required.
- Parents must accompany student to the first meeting.
- Students receiving special education services or 504 accommodations would be handled through the IEP/504 process.
- Dismissal from the P.A.S.S. program due to missed appointments or positive drug tests will result in an immediate recommendation for expulsion.

**For more information contact:
Student Support Services at (619) 644-8012.**

DISCIPLINE INTERVENTIONS
SYSTEMS TO ENCOURAGE PEACE
(S.T.E.P.)

- Program for students who have had a first time altercation.
- Students are referred to S.T.E.P. by a home school administrator. Paperwork is faxed to Chaparral High School (619) 596-7815.
- A three day program which meets Monday thru Friday from 7:30 a.m. to 11:30 a.m. held on the Chaparral Campus.
- Students are to report to the program the first school day after the incident.
- Twelve classroom hours are required to complete the program.
- Small class size with individualized instruction.
- Successful completion of the program changes the suspension to a fieldtrip code.
- Special education students have a fifth grade reading level.
- Instructional materials, including paper and pencils will be provided.
- Parents do not need to accompany the student to the class.
- The same discipline/dress code rules apply at Chaparral as at the home school.
- Transportation is not provided.

For more information contact:
Mark Deesing (teacher) (619) 258-3740 ext. 235.

FOUNDATIONS

- For Special Education (9th – 12th grade) students with behavioral issues needing a self-contained special day program.
- Students are referred to Foundations through an I.E.P. team meeting.
- A behavior support plan must be in place and implemented prior to referral to program.
- Schedule and length of school day are individualized based on needs of the student. A six period school day is offered.
- Designed to provide constant supervision with behavioral support through a point and level behavior management system.
- Counseling services available through counseling intern program.
- Small class sizes with no more than 12 students per class (two classrooms).
- Foundations has two teachers and two instructional aides.
- All diploma course requirements offered with modifications (if needed).
- Designed for students to transfer to a less restrictive program.
- Located on the Chaparral campus.

For more information contact a Chaparral administrator:

Randy Reid (619) 258-3740 ext. 202

Lynelle Nicholson (619) 258-3740 ext. 203

Lucia Washburn (619) 258-3740 ext. 210

Or Special Education District Administrator, Rose Tagnesi at (619) 644-8115.

G.E.D. PREP. PROGRAM

- For students 17 ½ or older who are deficient in credits and will not meet graduation requirements by the end of their senior year.
- Referral to the G.E.D. Prep. Program is made through the home school.
- Students who have an I.E.P. or who have recently been dropped from Special Education classes often times will not be eligible.
- Core test subject areas of English writing, English reading, Math, Science and Social Studies are taught.
- Each subject area takes one month to complete.
- It is possible to earn five elective credits per subject area with all work completed and passing the practice exam.
- Students have weekly appointments with a teacher that last from ½ hour to two hours.
- Students work independently to complete work.
- The G.E.D. prep program is located on the Chapparral campus.
- The G.E.D. test is taken through adult school.

**For more information contact:
Debra Powell at (619) 258-3787.**

HOMESTEAD

- For Special Education (9th – 12th grade) students with behavioral issues needing a self-contained special day program at a separate special education center.
- Students are referred to Homestead through an I.E.P. team meeting.
- A behavior support plan must be in place and implemented prior to referral to program.
- Designed to provide students with a high degree of behavioral support and structure with the availability of staff to quickly intervene and deescalate problem behavior.
- Six period school day in which most students rotate among eight special education classrooms.
- All diploma course requirements offered with modifications (if needed).
- Small class sizes.
- Crisis and ongoing counseling services provided five days a week by counseling intern program.
- Located at 10435 Chubb Ln. in Santee.

For more information contact:

Steve Gotowala (Assistant Principal) at (619) 596-3682

Rita Hailey (School Psychologist) at (619) 596-3682

HOME CHOICE

- Home Choice enables students to acquire a high quality education by working at home with parents as tutors.
- Administrator or counselor gives information on Home Choice program to parent and student. Parent and student choose to enroll with Home Choice.
- Average academic ability and performance is required.
- District teachers monitor and assess student progress.
- Students and parents meet regularly with teachers.
- Tests are taken in Home Choice office.
- Students maintain option of attending one or two classes at their home school and are eligible to participate in athletics, clubs and graduation.
- Courses required for graduation as well as electives are offered.
- Transcripts and attendance verification provided.
- All levels of course study are available.
- Students may complete courses more rapidly but not more slowly than in a traditional school.
- Students enroll in five to seven courses each semester.
- The Home Choice office is located at 301 N. Mollison in El Cajon.

For more information contact:

Kathy Burton (Program Director) (619) 593-2760.

HOME CHOICE LEARNING CENTER

- Geared for 5th year seniors wanting to complete their high school diploma, as well as potential dropouts. (Students who are substantially deficient in credits).
- Students are referred to this program by the school sites.
- Students attend classes Monday through Friday for two hours each day.
- Class hours are combined with independent study work for a minimum of four hours per day that students are responsible for completing on their own.
- On-line Curriculum is used.
- Students take 1 subject at a time and can potentially complete one class every three weeks.
- The Home Choice Learning Center is located at ECREC.

For more information, contact:

Kathy Burton (Program Director) at (619) 593-2760

HOME/HOSPITAL INSTRUCTION PROGRAM

- Designed to provide home or hospital instruction for students who are homebound with temporary physical, mental or emotional disabilities and are properly diagnosed.
- Referrals are made by the home school administrator, counselor or school nurse.
- The program coordinator will facilitate orientation and enrollment if a **physician's statement form** verifies that home/hospital instruction is needed and the department chairperson verifies with the physician that Home/Hospital Instruction is the appropriate placement.
- This program is for students who are expected to be absent from school for a minimum of four weeks.
- Placement for special education students is an IEP team decision if student has a physician's statement form.
- Students can receive up to five hours of home/hospital instruction per week.
- Independent study work is required.
- Placement is reviewed each semester.
- The Home/Hospital Instruction Program office is located at El Cajon Valley High School.

**For more information contact:
Kay Lynn Lindley at (619) 401-9700.**

MIDDLE COLLEGE HIGH SCHOOL

- This is a WASC accredited high school that is located on the Grossmont College Campus.
- Grossmont Middle College is for students wishing to earn both high school and college credits concurrently.
- Enrollment for Grossmont Middle College students is through an application process.
- There is a limited number of spaces. Currently there are between 60 and 70 students enrolled.
- Grossmont Middle College is for 11th and 12th grade students only.
- Students must be “college capable” - as reflected in grades, test scores, writing and speaking ability.
- In addition to taking English and Social Science classes using high school curriculum, students take a minimum of 6 college units per semester to fulfill high school graduation requirements.
- Students must maintain a minimum 2.75 high school GPA, as well as a 2.0 college GPA to remain in good standing.
- Additional requirements include a 60-hour career related internship per semester and fulfillment of study skills and career pathways assignments.

**For more information contact:
Kathy Zemlich (lead teacher) (619) 644-7524.**

PHOENIX INDEPENDENT STUDY PROGRAM

- A voluntary independent study program for 10th – 12th grade students.
- Referrals are made by the home school administrator.
- Students must have a minimum of an 8th grade reading level.
- Intake is done at Chaparral High School.
- Class locations are on the following six campuses: Grossmont, El Cajon, Mt. Miguel, El Capitan, Granite Hills and West Hills.
- This is not a “catch up” program.
- Students work on one course at a time for three to five weeks.
- 25 to 30 credits maximum can be completed in a semester.
- Limited electives are available.
- Students meet with a teacher once a week and are given a minimum of 20 hours of work to be completed at home by the following week.
- One missed appointment counts as five absences.
- Incomplete work counts as absences.
- At 15 absences, the student is referred back to their home school or to another alternative program.

For more information contact Debora Powell at (619) 258-3787.

REGIONAL OCCUPATIONAL PROGRAM (ROP)

- GUHSD ROP is designed to prepare high school students with high-quality and relevant occupational training that develops job-specific skills, knowledge and attitudes, as well as prepare students for further education.
- High school students are referred to ROP classes through their home school counselors.
- Students must be eligible to attend classes in the Grossmont Union High School District to be enrolled into ROP classes.
- Generally, high school students referred to ROP classes should be 16 years of age or in the 11th grade. Exceptions to this minimum age/grade requirement must be approved based on the individual's educational plan which requires enrollment into a ROP class as a tenth grader.
- Students can earn high school credit for successful completion of ROP classes in accordance with District policies.
- Some ROP courses meet District graduation requirements; other courses may be eligible for college credit through articulation agreements; and several courses meet the UC 'a-g' requirements.
- Students who successfully complete ROP courses will receive an ROP Certificate of Completion and a list of occupational competencies they have mastered for that class.
- Industry certifications and licensure may be available for specific course offerings.
- GUHSD ROP is accredited by the Western Association of Schools and Colleges.
- ROP courses are integrated into the school site and offered at every GUHSD campus, the Health Occupation Center, and the Work Training Center. Some courses are offered in the evening or on Saturday.
- The ROP Administrative Offices are located at 924 East Main St., El Cajon.

**For more information contact:
The ROP Office at (619) 590-3923
or visit the East County ROP website at: eastcountyrop.org**

TEEN PARENT PROGRAM

Cal –SAFE

- A program for teen parents and their child designed to allow teen parents to continue their education.
- Referrals are made by the home school administrator or counselor.
- The program coordinator will facilitate orientation and enrollment.
- The program is located on the Grossmont High School campus.
- The teen parent's child (infants must be at least two weeks old) is enrolled in the Child Development Center located on campus.
- Teen parent is assigned as a Teen Parent Aide for the Child Development Center at least one period per day.
- Pregnant teens may remain at their home school or may transfer to the teen parent program before or after delivery.
- Staff members strive to support the teen parent and the family.
- Child care, nutrition, and parenting skills are taught in conjunction with core academic classes.
- Opportunity to meet all graduation requirements provided.
- The hours of the program can be flexible, dependent on each teen parent's situation.
- Transportation is provided on the school bus or trolley if needed.
- The program is subsidized by Cal-SAFE.

**For more information contact:
Melissa Peterson at (619) 668-6099 or mpeterson@guhsd.net**